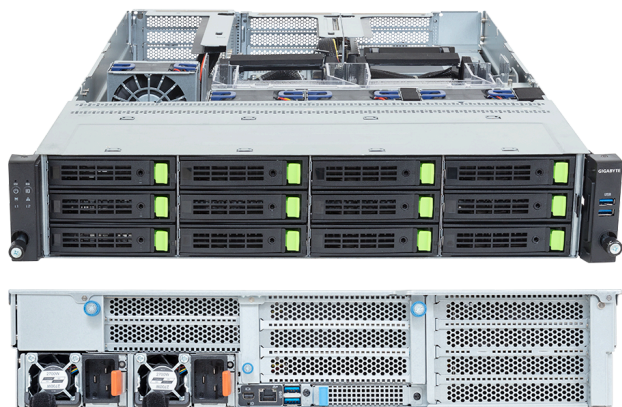


# R263-ZG0-AAL2 (Rev. 3.x)

Rack Server - AMD EPYC™ 9005/9004 Server Processors -  
2U UP 4 x PCIe Gen5 GPUs



## Key Features

- Supports up to 4 x dual-slot Gen5 GPUs
- Single AMD EPYC™ 9005/9004 Server Processors
- 12-Channel DDR5 RDIMM per CPU with 24 x DIMMs
- 12 x 3.5"/2.5" Gen5 NVMe/SATA/SAS-4 hot-swap bays
- 2 x M.2 slots with PCIe Gen3 x2
- 4 x FHFL PCIe x16 slots with Gen5 x16 lanes for GPUs
- 1 x FHHL PCIe x16 slot with Gen5 x16 lanes
- Dual 2700 W 80 PLUS Titanium redundant power supplies

## Applications

AI Platform, AI Training Server, AI Inference Server, Visual Computing, High-Performance Computing Server, Networks Server, Servers for Hybrid/Private Cloud...

## Specification

<b>Dimensions</b>	2U (W438 x H87.5 x D815 mm)	<b>I/O Ports</b>	<b>Front:</b> 2 x USB 3.2 Gen1 <b>Rear:</b> 2 x USB 3.2 Gen1, 1 x Mini-DP, 1 x MLAN
<b>Motherboard</b>	MZG3-GU0	<b>Backplane Board</b>	PCIe Gen5 x4 or SATA 6 Gb/s or SAS-4 24 Gb/s
<b>CPU</b>	AMD EPYC™ 9005 Server Processors AMD EPYC™ 9004 Server Processors Single processor, cTDP up to 400 W - At 25°C ambient, cTDP up to 500 W	<b>TPM</b>	1 x TPM header (SPI), Optional TPM 2.0 kit: CTM012
<b>OS Compatibility</b>	<a href="#">OS Support List</a>	<b>Power Supply</b>	Dual 2700 W 80 PLUS Titanium redundant power supplies AC Input: 100-240 V  *The system power supply requires C19 power cord.
<b>Socket</b>	1 x LGA 6096 (Socket SP5)	<b>System Management</b>	ASPEED® AST2600 Baseboard Management Controller GIGABYTE Management Console web interface
<b>Chipset</b>	System on Chip	<b>System Fans</b>	4 x 80x80x56mm
<b>Memory</b>	12-Channel DDR5 RDIMM, 24 x DIMMs [EPYC 9005] Up to 5200 MT/s (1DPC) Up to 4400 MT/s (1R 2DPC), 4000 MT/s (2R 2DPC) [EPYC 9004] Up to 4800 MT/s (1DPC), 3600 MT/s (2DPC)	<b>Operating Properties</b>	Operating: 10°C to 30°C, 8% to 80% (non-condensing) Non-operating: -40°C to 60°C, 20% to 95% (non-condensing)
<b>LAN</b>	1 x 10/100/1000 Mb/s Management LAN	<b>Packaging Content</b>	1 x R263-ZG0-AAL2 1 x CPU heatsink 1 x Mini-DP to D-Sub cable 1 x GPU power cable (16-pin, 250mm) 2 x GPU power cables (16-pin, 450mm) 1 x GPU power cable (16-pin, 550mm) 1 x 2-Section Rail kit
<b>Video</b>	Integrated in ASPEED® AST2600 - 1 x Mini-DP	<b>Ordering Part Numbers</b>	6NR263ZG0DR000ACL2*
<b>Storage</b>	<b>Front hot-swap:</b> 12 x 3.5"/2.5" Gen5 NVMe/SATA/SAS-4 <sup>[1]</sup> <b>Internal M.2:</b> 2 x M.2 (2280/22110), PCIe Gen3 x2  <sup>[1]</sup> Storage card is required to support SATA and SAS drives.	<b>Optional Parts</b>	- 3-Section Rail kit (Supports CMA): 25HB2-A56121-K0R - Cable Management Arm: 25HB1-R18300-K0R
<b>RAID</b>	Require RAID add-in cards		
<b>PCIe Expansion Slots</b>	4 x FHFL x16 (Gen5 x16), for GPUs 1 x FHHL x16 (Gen5 x16)		



Learn more at: <https://www.gigabyte.com/Enterprise>

\* All specifications are subject to change without notice. Please visit our website for the latest information.

\* All trademarks and logos are the properties of their respective holders.

© 2026 Giga Computing Technology Co., Ltd. All rights reserved.

Last updated: Jul 1, 2026

Designed by

